



Enfilade of public squares: Market square, Culture square and Event square.

Working, Living, Making, Learning, & Enjoying

1) Polycentric system.

Our site becomes an alternative, new center of Klagenfurt. Its urban structure is analogous to the historical city center, and programmatically it is a new center of attraction of citizens, students, businesses, culture and innovations. The new center has polycentric system within itself too.

2) Historical ring.

System of existing green spaces around the historical center is supported by a New green ring. The New Green Ring allows integration of historical public spaces and new public spaces in one well-connected system.

3) Integration through connection.

The project site of European Klagenfurt is opened to the city and integrated by a system of new functional attractions. Spine of public spaces develops from North-West to South-East edges of the site and of-

fers a new pedestrian connection of the Main railway station with central and eastern parts of the city.

4) Slow mobility.

The new speed railway line brings new energy to the city and an advantage to rethink the system of transportation within the city. Principles of slow mobility are proposed on the site and adjacent areas. Pedestrian, bicycles and scooter routes, combined with system of greenery, will comfortably connect all areas of the site with historical center and the main railway station.

5) Existing as a resource for future development.

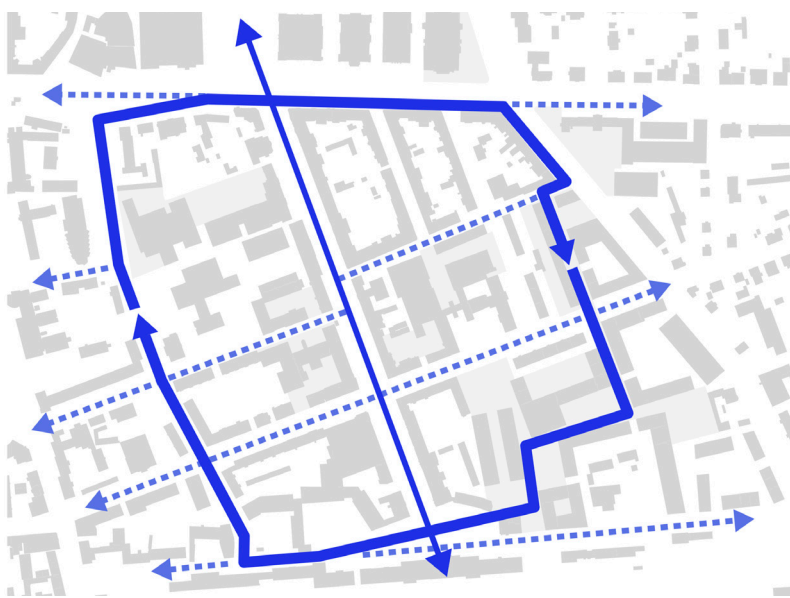
All the new elements on the site use and develop potential of existing resources on the site. The new buildings complete existing dispersed structures in organized urban blocks. Old and new elements assemble together a comfortable urban environment and form the identity of the place. The existing structures preserved and regenerated by the new function and if needed extension. The existing big open spaces (like Makers square) preserved and enriched by allocation of additional functions around and intensified in use.

6) 5 Squares, 5 parks.

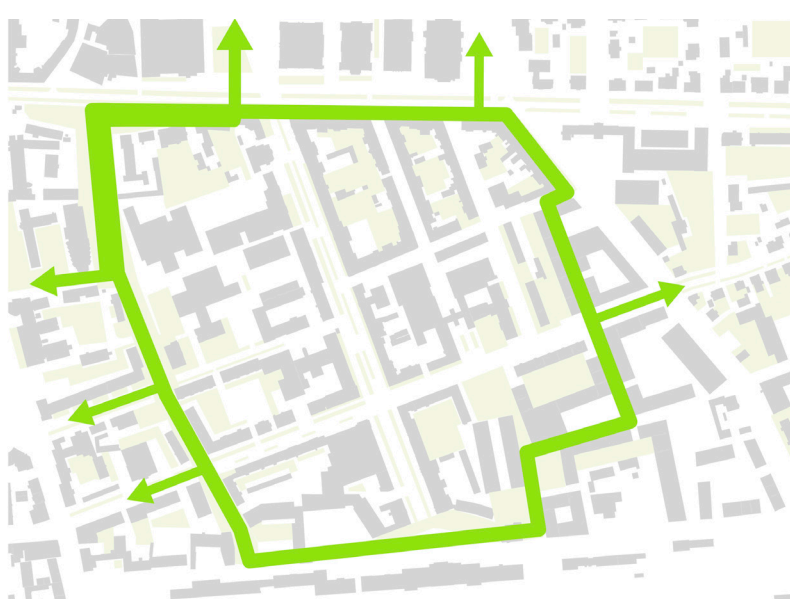
Building blocks on the site form pulsating system of open spaces. Enfilade of public squares creates the main circulation route and forms a spine of public spaces of the site, while parks assure comfortable connection with adjoining areas. Each of 5 squares have their own scale, function and atmosphere: Educational square, Multipurpose (central) square, Makers square, Cultural square and Market square. Each of 5 parks celebrates diversity of types of greenery in the city: Communal garden, Children's park, City forest, Secret garden and City park.



Historical ring and New Green ring create continuous system of public spaces.



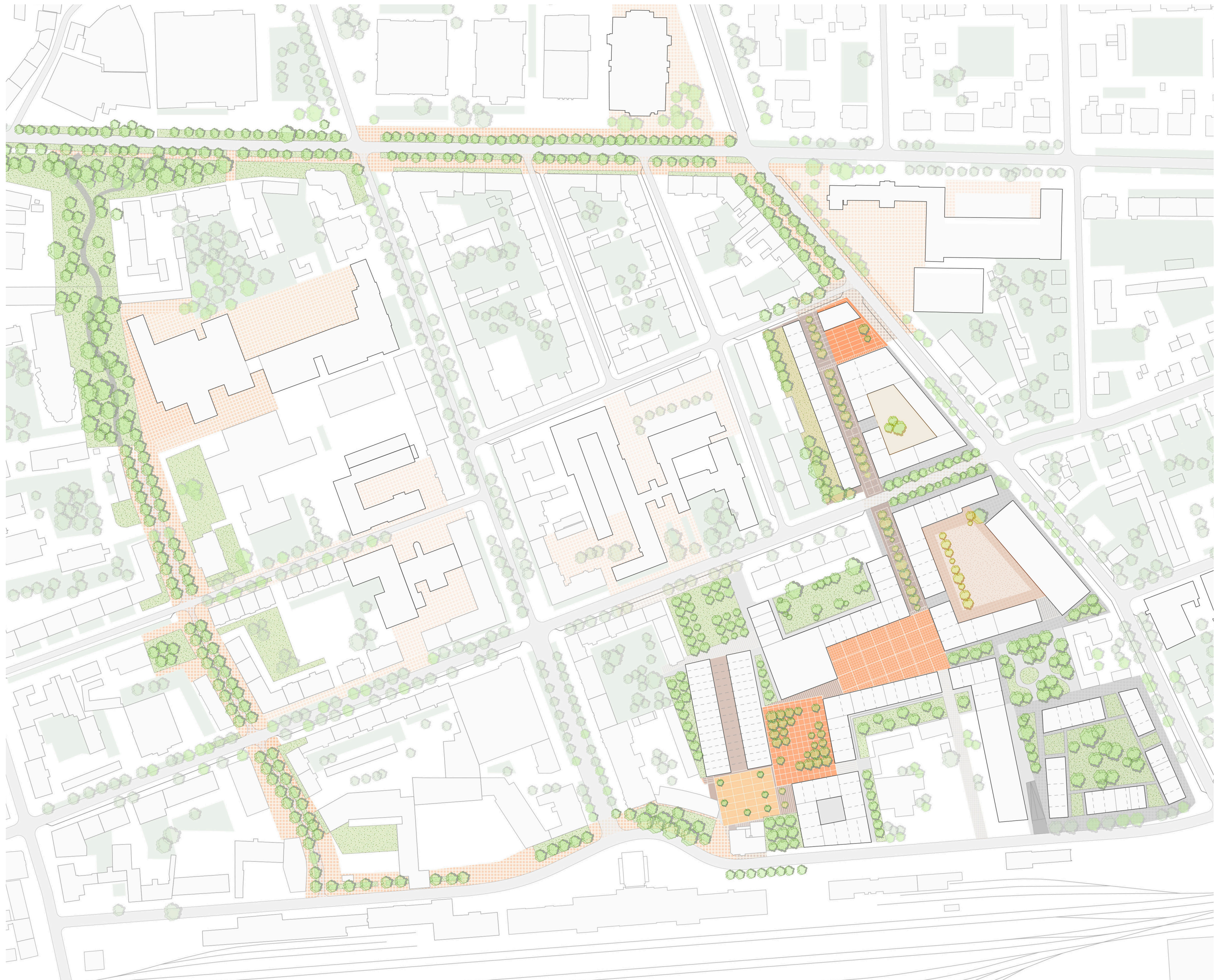
Pedestrian, bicycles and scooter routes connect the site with historical center and the railway station.



System of greenery combined with slow mobility circulation connect public spaces of the site.

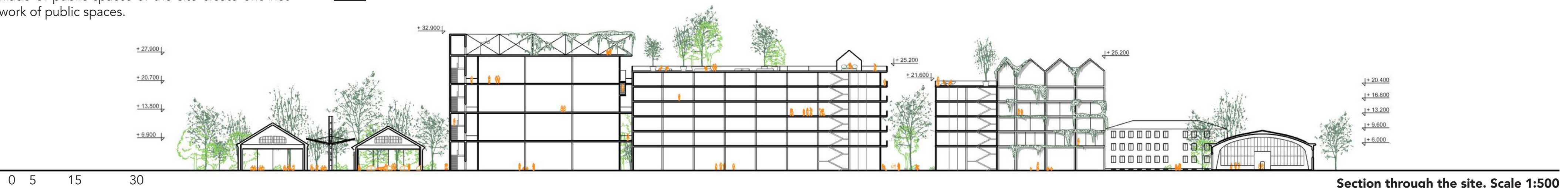


Existing squares of the institutions together with enfilade of public spaces of the site create one network of public spaces.



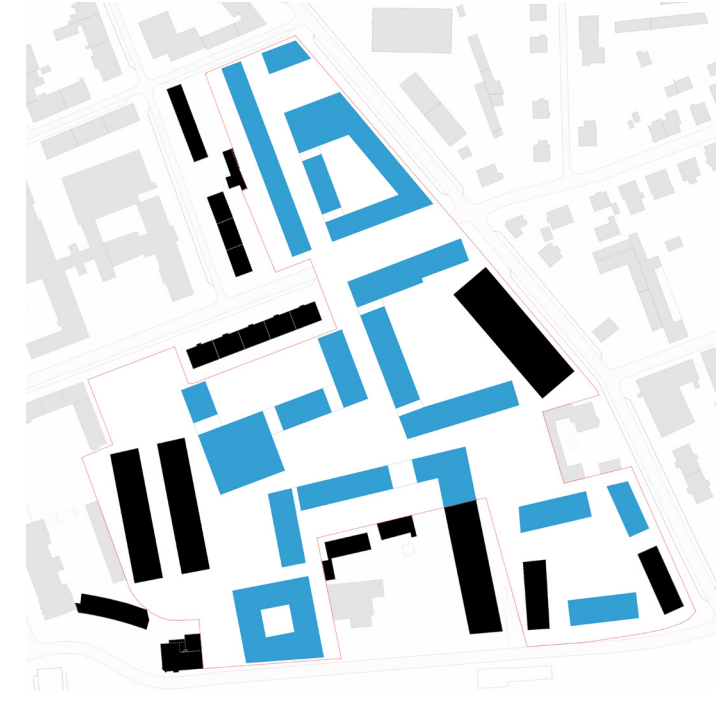
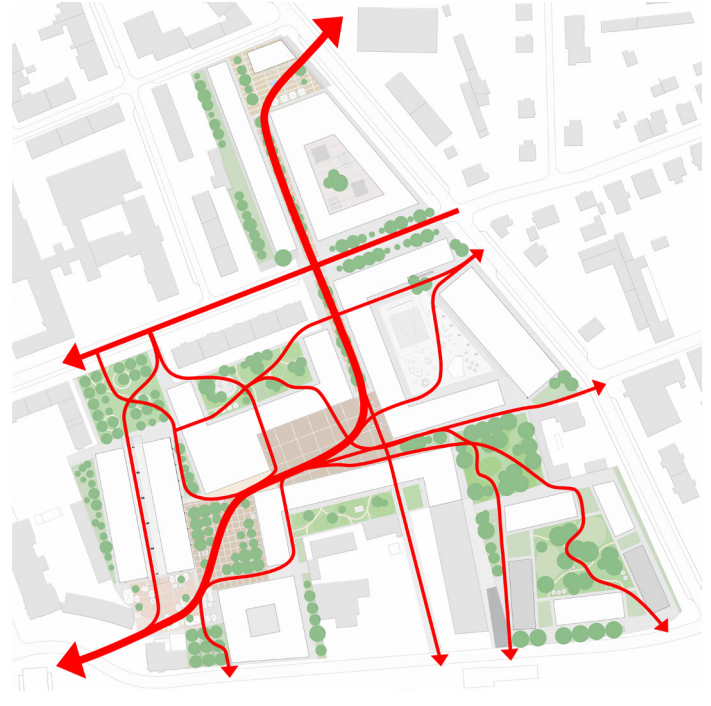
0 15 45

Strategic site. Scale 1:2000



0 5 15 30

Section through the site. Scale 1:500

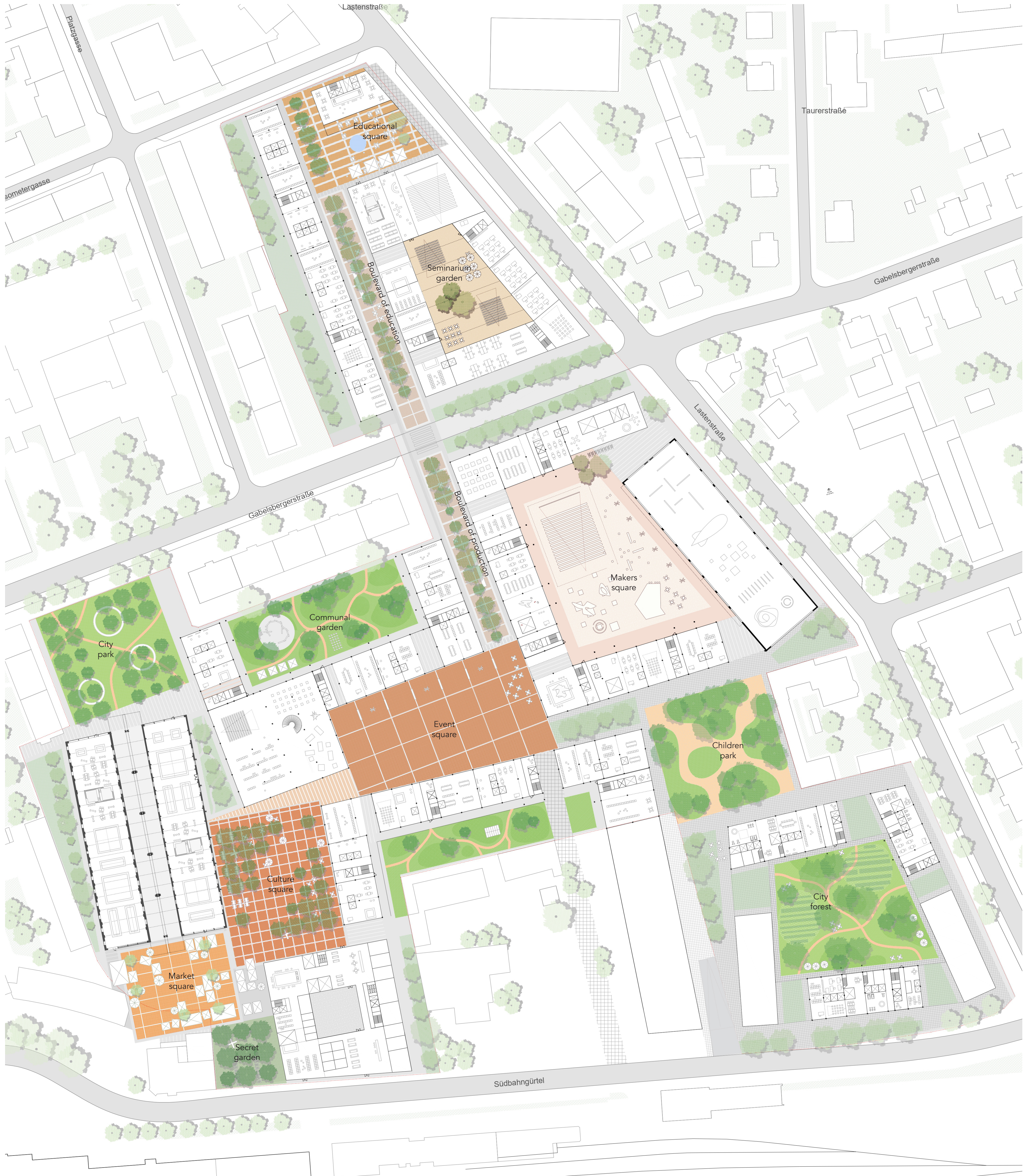


Integration through connection.
Enfilade of 5 public squares offers new circulation route to the city. Many alternative routes of circulation makes the site open and attractive.

Old and New
New building complete existing structure in organised urban blocks, forming enfilade of public spaces.
Existing buildings (blue) New buildings (black)

Public greenery
Education (orange) Office (green) Dining (yellow)
Culture (red) Makers (pink) Sport (light green)
Utilities (blue) Commerce (purple) Production (dark purple)

Public greenery
Parks and communal gardens (green)
Green boulevards and public squares (light green)
Green rooftops (dark green)





Markers square: production and presentation, culture and education can use the same multipurpose square.

7) Dispersed education as a uniting urban layer. Education as one of the main function on the site exist almost in every building. Rooms of different size and configuration mixed with production, living and commercial. Access directly from the street as well as from inside the institutions, allows to use these facilities for educational activities of different type and students (from children and family to older generation). The same spaces could be rented for any external events: from city presentations or business meetings to private celebrations. The entire site could be seen as available to book fa-

ilities for a long or very short term. Availability of the facilities will attract new users and participants and allow to recreate fresh, ever-developing future oriented community. Regimes of occupation will be defined by the community, external interest and economical sense.

8) Mixed use and mixed users.

The structure of the buildings offers flexible modular system, which allow coexistence functions of different type and different scale. The functions can occupy either singular module or constellation of

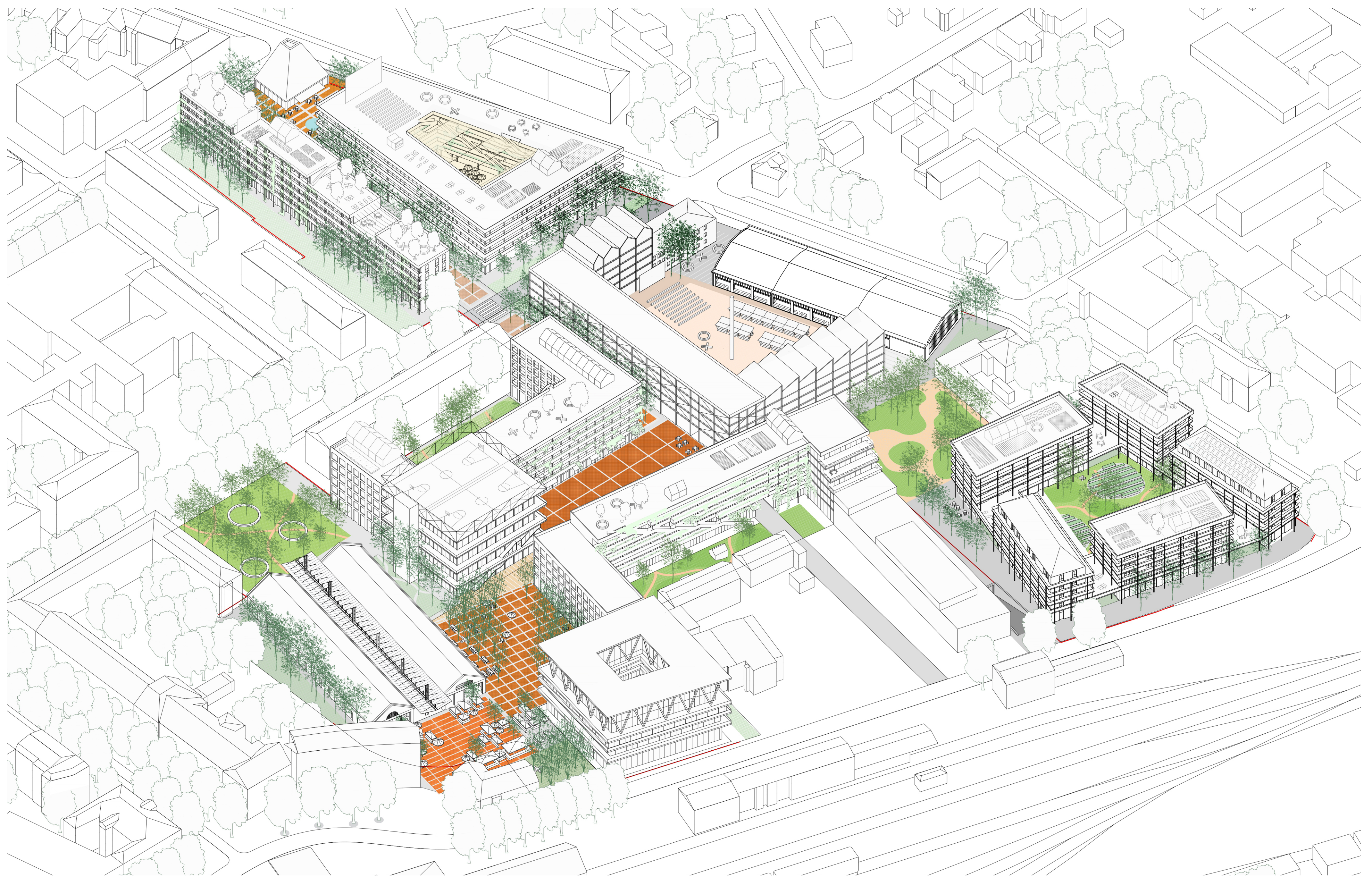
modules. That assures smooth transition from small to big functions, from private to institutional scale. Living, education, production and culture - all these types of functions comfortably coexist on the site. Market and event squares, communal gardens and parks, Educational boulevard and covered street, multipurpose Makers square and Seminar garden. All these diverse open spaces surround the buildings and create a gradient of atmospheres: from active to calm, from open to enclosed. Structural system of the buildings unites the site, while functions create diversity and identity of the site.

9) Flexible and efficient 24/7.

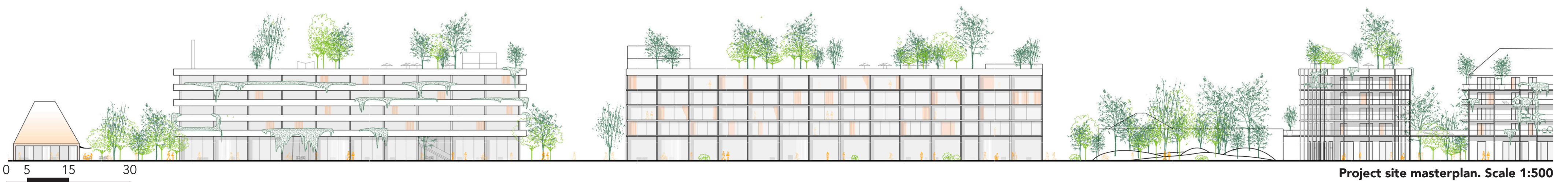
The layout and access system of the buildings offers flexible usage and regimes of use, which allow to share different functions the same physical space in time. The regimes of use of the site make it attractive and interesting all day long, seven days a week. Possibility of transformation over the weekend and working days, reflect seasonal changes and host different functions in the morning and in the evening makes the development much more ecological-oriented and economically efficient as well as well-prepared to the challenges of the future.

10) Green and technological.

Greenery as an essential part of architecture which unites all the parts of the site and in combination with technological solutions define the architectural appearance of cluster. Extensive greenery on south-oriented facades works as sun protection, possibly combined with urban farming. Green rooftops serve as sportgrounds, playgrounds, leisure and agricultural facilities. On the ground level different configuration of the greenery donates to definition of atmosphere of public squares, and serves as the main tool of diversification of green zones.



Axonometry of the Project site



Project site masterplan. Scale 1:500